

16 WIRES TYPICAL  
32 WIRES OPTIONAL

ICS BACK PANEL

12VDC  
POWER SUPPLY



12 VDC



ANALOG I/O

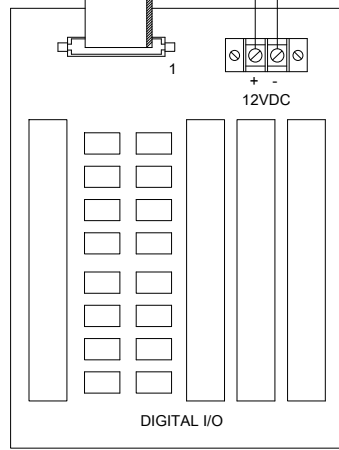


RS232

50 WIRE  
RIBBON CABLE  
RED WIRE TO PIN 1

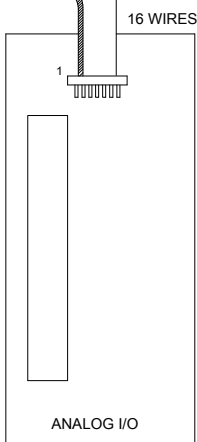


DIGITAL I/O #1

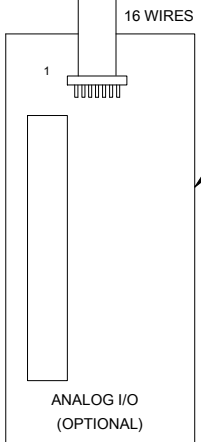


DIGITAL I/O

32 WIRE RIBBON CABLE  
RED WIRE TO PIN 1



ANALOG I/O



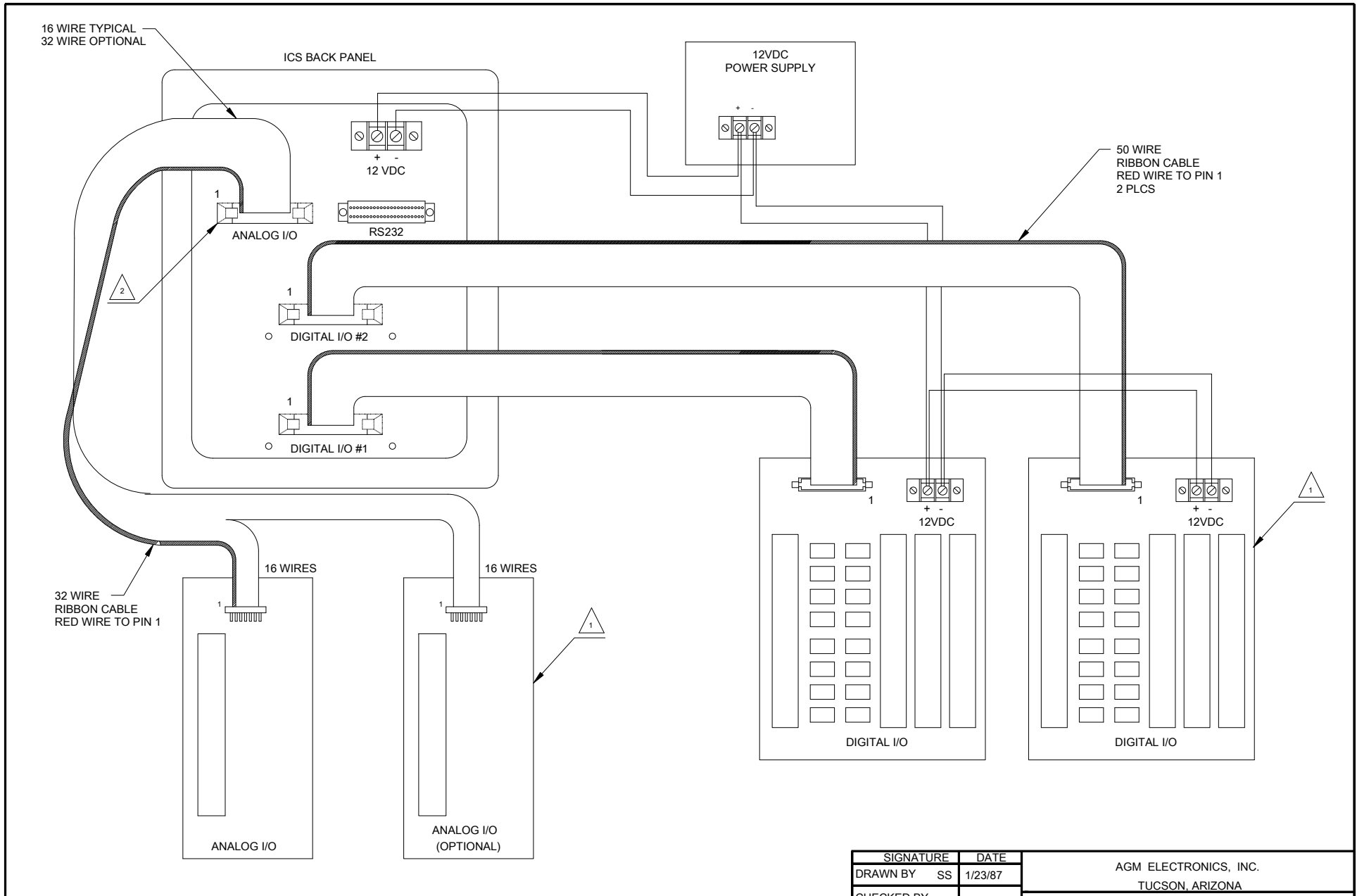
ANALOG I/O  
(OPTIONAL)

NOTES:

1 FOR DETAILS SEE ICS I/O WIRING PANEL, SHEET 3 OF 4.

2 16 CONDUCTOR CABLE ON A 34 PIN CONNECTOR FOR APPLICATIONS USING 4 ANALOG I/O;  
32 CONDUCTOR CABLE ON A 34 PIN CONNECTOR FOR APPLICATIONS USING 8 ANALOG I/O.

SIGNATURE		DATE		AGM ELECTRONICS, INC. <small>TUCSON, ARIZONA</small>		
DRAWN BY SS		1/23/87				
CHECKED BY				ICS/PASSIVE PANEL INTERCONNECTION DIAGRAM FOR UP TO 8 ANALOG I/O, 16 DIGITAL I/O		
APPROVED BY						
APPROVED FOR PROD.						
CONTRACT NO.				CODE IDENT NO.		
300747A				SIZE	PART NO.	REV
				A	WSD-C30074-7	H
SCALE NONE				WT		SHEET 1 OF 4

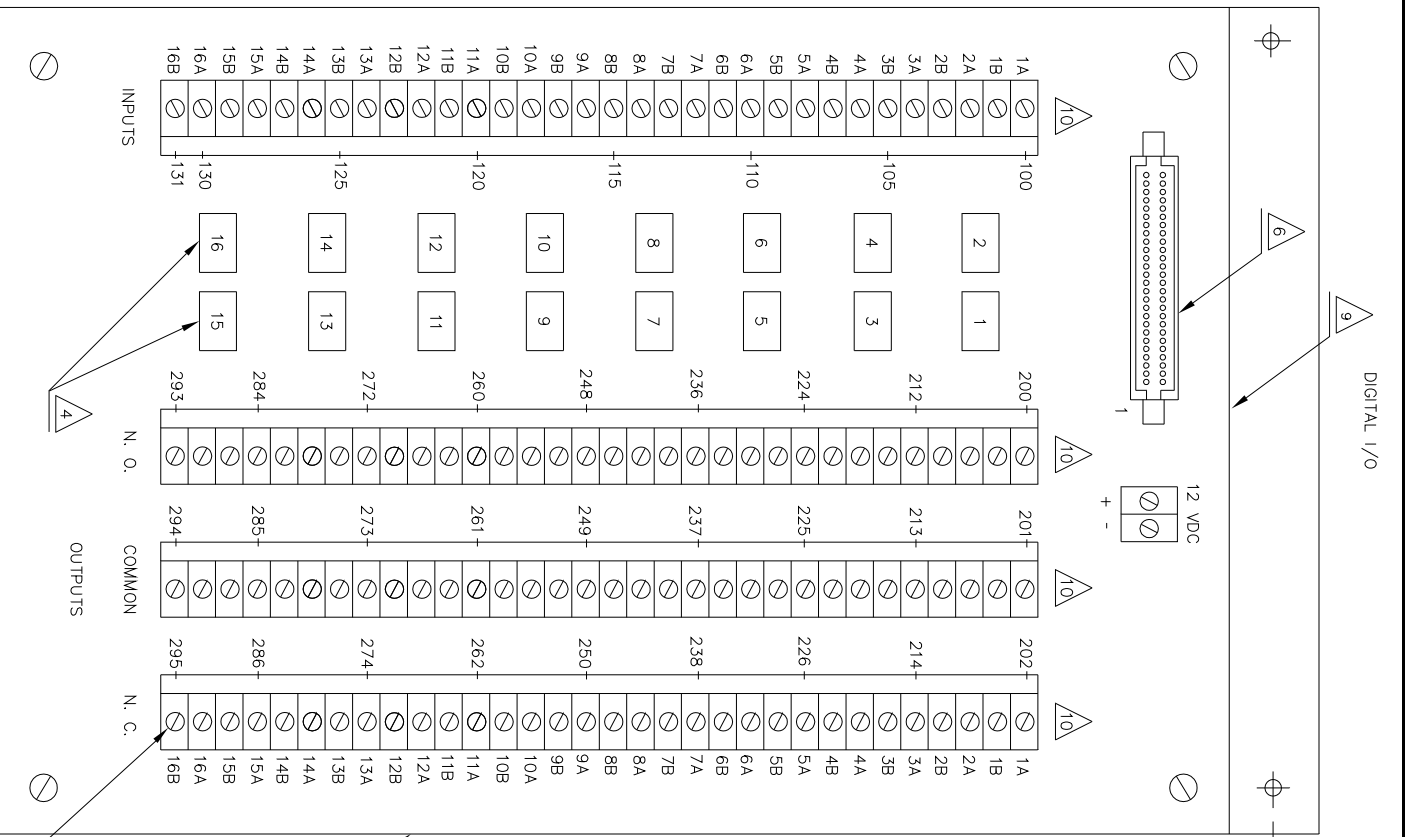


NOTES:

1 FOR DETAILS SEE ICS I/O WIRING PANEL, SHEET 3 OF 4.

2 16 CONDUCTOR CABLE ON A 34 PIN CONNECTOR FOR APPLICATIONS USING 4 ANALOG I/O;  
32 CONDUCTOR CABLE ON A 34 PIN CONNECTOR FOR APPLICATIONS USING 8 ANALOG I/O.

SIGNATURE		DATE		AGM ELECTRONICS, INC. TUCSON, ARIZONA ICS/PASSIVE PANEL INTERCONNECTION DIAGRAM UP TO 8 ANALOG I/O 32 DIGITAL I/O		
DRAWN BY SS		1/23/87				
CHECKED BY						
APPROVED BY						
APPR'D FOR PROD.						
CONTRACT NO.				300747B		
CODE IDENT NO.	SIZE	PART NO.	REV			
	A	WSD-C30074-7	H			
SCALE NONE	WT	SHEET		2 OF 4		



- 1 ANALOG I/O TO ICS, MB 9073.  
LENGTH - 10.50 INCHES X 4.50 INCHES.
- 2 OUTPUT OF ICS IS DIGITAL SIGNAL BOARD, MB 9067.  
BACK PANEL LENGTH - 17.00 INCHES X 9.00 INCHES.
3. OPTIONAL SECOND DIGITAL BOARD CAN BE  
SUPPLIED IF SPECIFIED BY CUSTOMER.

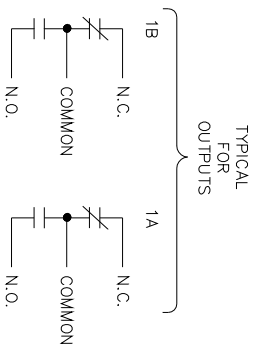
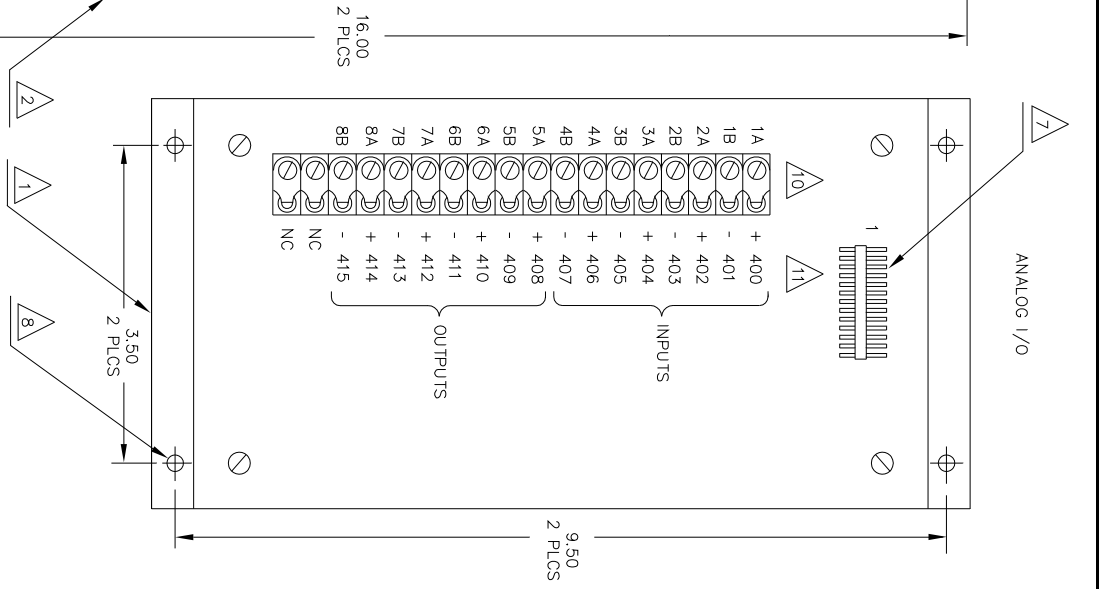
**BACK PANEL DIMENSIONS 9'x 17'**

- 4 R-10 E1-W2-V185 RELAYS AGM #1628, 12VDC COILS, 16 PLACES TYPICAL.
- 5 HOLES ARE FOR #10 SCREW AND ARE CENTERED .50 INCH ON CORNERS.
- 6 AGM #3018, MMM 50 PIN #3433-6202.
- 7 AGM #3082, CIRCUIT ASSY, 26 PIN, PN CA-1026RSP100-230-090.
- 8 .20 DIA MOUNTING HOLES
- 9 2.25 DEPTH CLEARANCE
- 10 IF 2 DIGITAL PANELS ARE USED, A SUFFIX A WILL BE ADDED (W200AW201A).
- 11 IF 2 ANALOG PANELS ARE USED, INPUT WILL START WITH TERMINAL 1 A,B (W420W421).

- 1 ANALOG I/O TO ICS, MB 9073.  
LENGTH - 10.50 INCHES X 4.50 INCHES.
- 2 OUTPUT OF ICS IS DIGITAL SIGNAL BOARD, MB 9067.  
BACK PANEL LENGTH - 17.00 INCHES X 9.00 INCHES.
3. OPTIONAL SECOND DIGITAL BOARD CAN BE  
SUPPLIED IF SPECIFIED BY CUSTOMER.
- 4 R-10 E1-W2-V185 RELAYS AGM #1628, 12VDC COILS, 16 PLACES TYPICAL.
- 5 HOLES ARE FOR #10 SCREW AND ARE CENTERED .50 INCH ON CORNERS.
- 6 AGM #3018, MMM 50 PIN #3433-6202.
- 7 AGM #3082, CIRCUIT ASSY, 26 PIN, PN CA-1026RSP100-230-090.
- 8 .20 DIA MOUNTING HOLES
- 9 2.25 DEPTH CLEARANCE
- 10 IF 2 DIGITAL PANELS ARE USED, A SUFFIX A WILL BE ADDED (W200AW201A).
- 11 IF 2 ANALOG PANELS ARE USED, INPUT WILL START WITH TERMINAL 1 A,B (W420W421).

SIGNATURE		DATE	
DRAWN BY	JAG	9/24/88	
CHECKED BY	RJO	9/24/88	
APPROVED BY	JCV	9/24/88	
APPROVED FOR FABR.			
CONTRACT NO.			
AGM ELECTRONICS, INC.		TUCSON, ARIZONA	
ICS/PASSIVE PANEL LAYOUT AND DIMENSIONS (ANALOG & DIGITAL PANELS)			
CODE IDENT NO.	SIZE	PART NO.	REV
E-CORRECT DIMENSION	A	WSD-C30074-7	H
SCALE NONE	WT		SHEET 3 OF 4

**BACK PANEL DIMENSIONS 4.5'x10.5'**

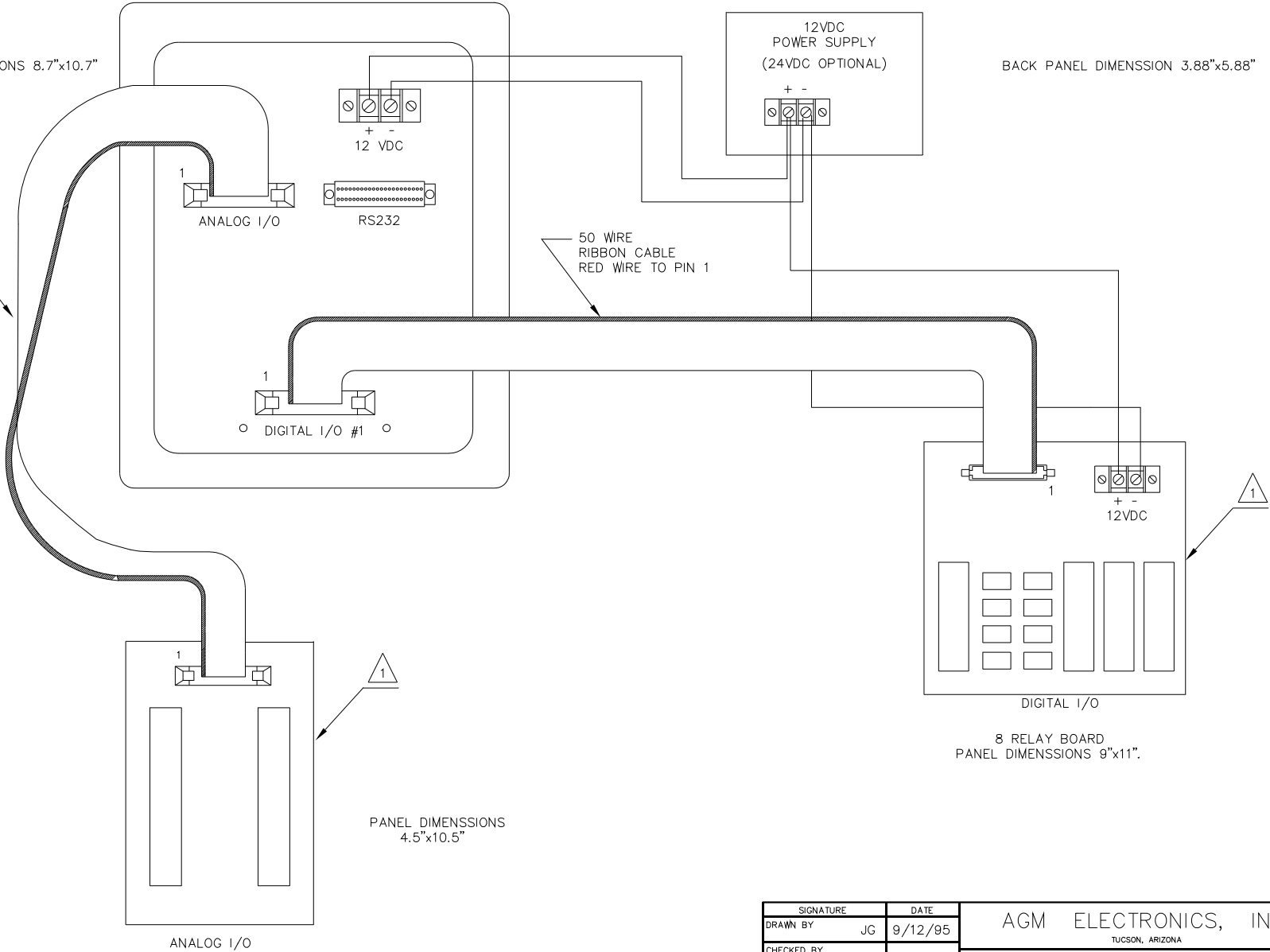


PANEL OVERALL DIMENSIONS 8.7"x10.7"

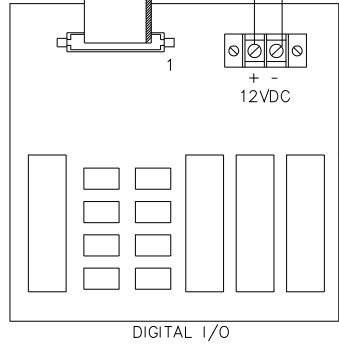
BACK PANEL DIMENSION 3.88"x5.88"

16 WIRE  
RIBBON CABLE  
RED WIRE TO PIN 1

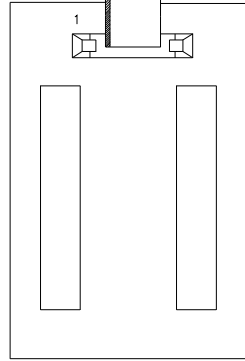
50 WIRE  
RIBBON CABLE  
RED WIRE TO PIN 1



1  
DIGITAL I/O #1



8 RELAY BOARD  
PANEL DIMENSIONS 9"x11".



ANALOG I/O

PANEL DIMENSIONS  
4.5"x10.5"

NOTES:

1 FOR DETAILS SEE ICS I/O WIRING PANEL, SHEET 3 OF 4.

SIGNATURE		DATE		AGM ELECTRONICS, INC.		
DRAWN BY JG		9/12/95		TUCSON, ARIZONA		
CHECKED BY SM		9/12/95		ICS PASSIVE PANEL		
APPROVED BY JV		9/12/95		INTERCONNECTION		
APPROVED FOR PROD.				UP TO 4 ANALOG I/O AND 8 DIGITAL I/O		
CONTRACT NO.				CODE IDENT NO.	SIZE	PART NO.
					A	WSD-30074-7
300747D				SCALE NONE	WT	REV H
				SHEET 4 OF 4		